



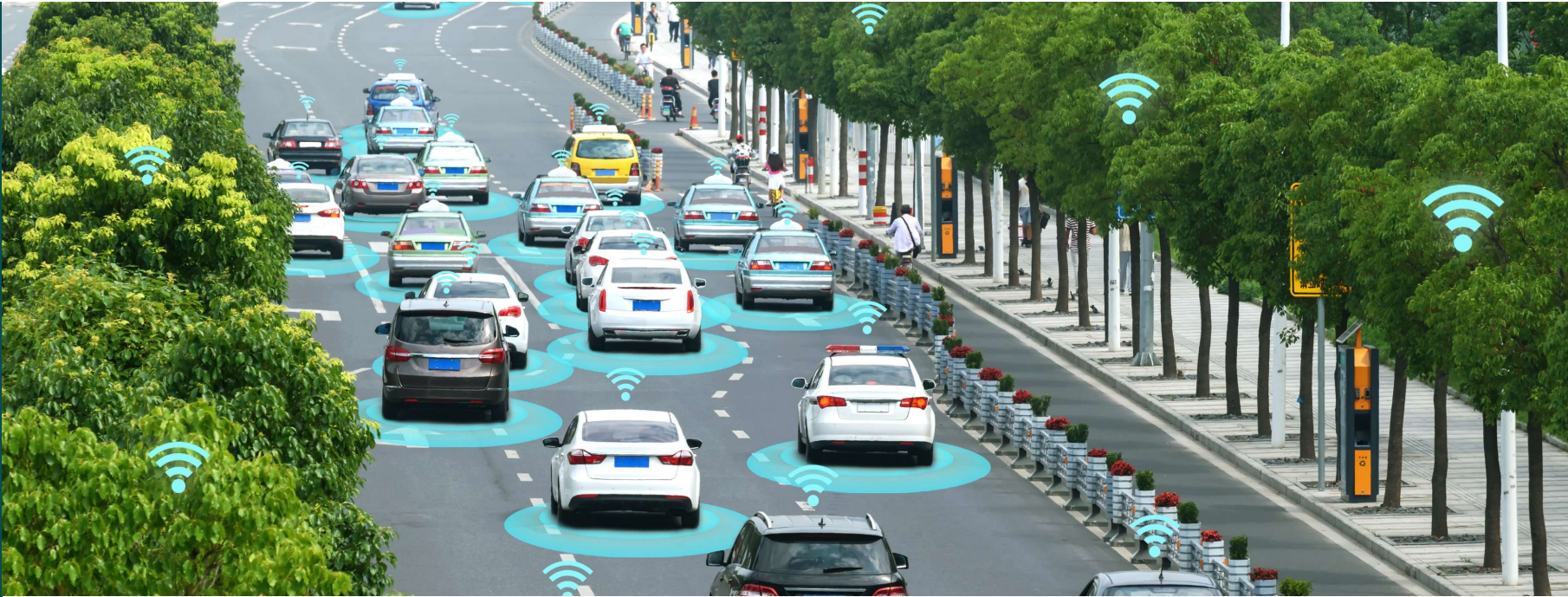
Connected Future Transport Systems

SHEEVA.AI

POWERING THE NEXT WAVE OF
VEHICLE COMMERCE AND SERVICES

[HTTPS://SHEEVA.AI](https://sheeva.ai)
TYSONS CORNER, VA
STERLING HEIGHTS, MI
NEW DELHI, INDIA
TURIN, ITALY
DRESDEN, GERMANY

07 July 2022



Automating the connected vehicle experience

Patented high-precision geo-location platform with open APIs for automated payments and last-mile navigation

No apps, no new infrastructure needed!

Vehicle Location Based Services (VLBS)

Automatic contactless payments

Vehicle-based, contactless payments for fuel, electric vehicle charging, road tolls, curbside pick-up and more!

Enhanced geo-location, last mile services

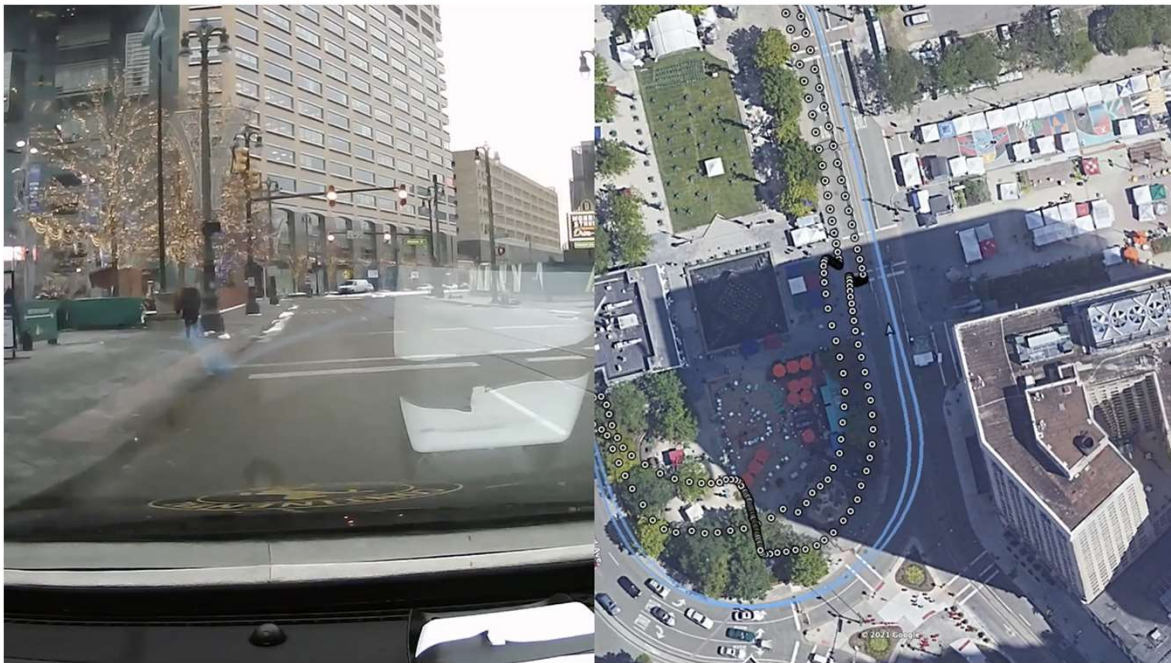
Precise, real-time geo-location (down to the gas pump, charging station, parking spot, traffic lane, etc..)

Your car, your wallet

Expand payment services by setting up the vehicle as your digital wallet for on-demand payments and services.



<2M Accuracy – Even in “Urban Canyons”



- **Video** is from test vehicle dash cam
- **White dots** show raw GPS data
- **Blue line** shows Sheeva location data

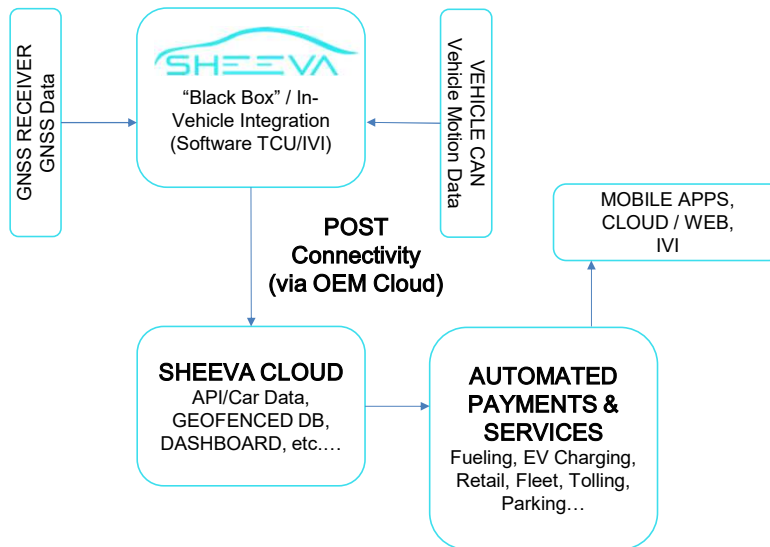
Easy To Use And Integrate

90 days pilot to production

API to API integration

White label mobile app SDK

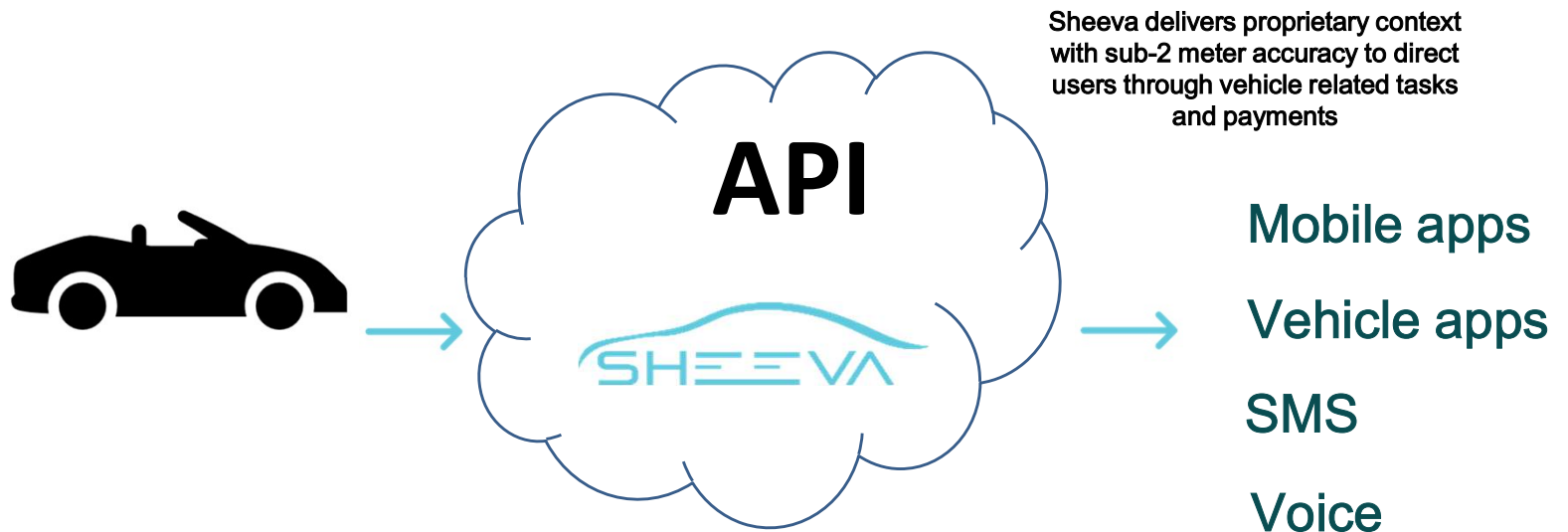
Patented precise geo-location



	SHEEVA	SMARTPHONES	STANDARD GPS
Overall Accuracy	< 2 meters	4 - 10 meters	3 - 8 meters
Deep Urban Canyons	1 - 3 meters	10 - 50 meters	5 - 15 meters
Connectivity	Real-time encrypted	Standard, unencrypted LTE	No connectivity / high latency
Vehicle Context	Integrated	Various apps	Not included
Geographical Information Systems	Included	Not included	Not included
Geofenced API Calls	Included via push API	\$5 per 1k hits (Google geofencing API)	Not included

The Sheeva Approach: Open Standards + Simplicity

As easy as an API



- Simple, scalable, low cost, and data efficient
- One API serves all apps and services
- Allows to offer new personalised and contextual services to the existing users
- Platform Agnostic: *Easy to integrate with the existing payments and other cloud services*
- *Access to New Business Models while promoting real-time Customer Engagement.*

New and Enhanced Connected Features



Parking

Looking for parking? Sheeva can reserve and guide you there. And, when you leave, your car automatically pays for you – fully contactless!



Fuel

Get alerted when fuel is low and follow the navigation to a fuel pump waiting for you. Fill up and go – payment is automatically completed on your behalf!



EV Charging

When charge is low, locate and navigate to a charging station reserved for you. After charging, just go – your car automatically authorizes payment as you hit the road

New and Enhanced Connected Features



Automatic Toll Payments

No need to worry about current tolling systems. With Sheeva, your car is the toll tag and payment is processed automatically.



Drive-Thru Assistant

Find, order, and pay for drive-thru services all through Sheeva – you get guided to the right lane and payment is processed by your car for you.



Curbside Pick-Up

Let Sheeva assist in curbside pick-up. When activated, you will be guided to a reserved parking space and your vehicle automatically notifies the store you are ready for pick-up!

New and Enhanced Connected Features



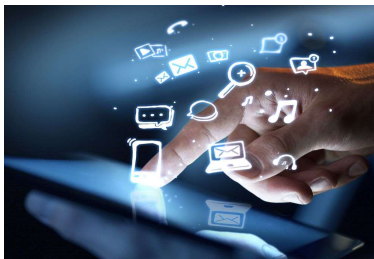
Road Usage Charging

Through vehicle tracking, Sheeva allows customized, specific, per-mile charging.



Continuous Presence

Sheeva is seamlessly connected to users in real-time - providing ubiquitous notifications and a continuous presence that builds customer loyalty.



Know Your Customer / Citizen

With tailored insights driving relevant offers and alerts, both government and commercial entities can reach each driver by mapping personalized promotions and just-in-time information



Questions / Discussion

[HTTPS://SHEEVA.AI](https://sheeva.ai)
TYSONS CORNER, VA
STERLING HEIGHTS, MI
NEW DELHI, INDIA
TURIN, ITALY
DRESDEN, GERMANY

07 July 2022

1

10

DAVID E. PICKERAL, JD
Head of Strategy

dpickeral@sheeva.ai

+1.703.343.5323

<https://www.linkedin.com/in/pickeral>